

# BSW LeDeR Information Briefing

## Wiltshire Health Select Committee

01/10/22

*Easy read symbols:*

*'easy-on-the-l' © Leeds and York Partnership NHS Foundation*

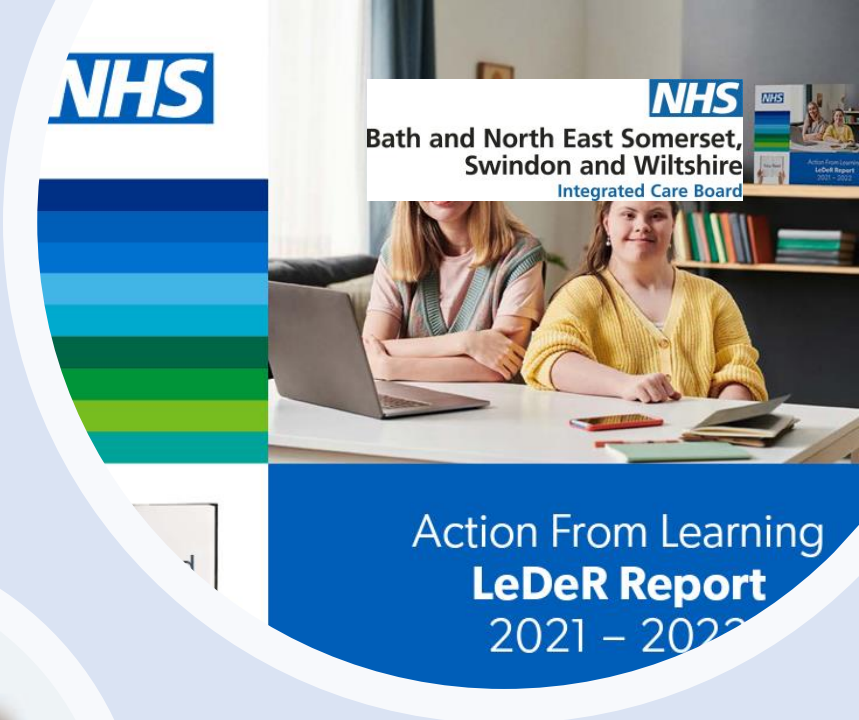
Cllr Jane Davies, Cabinet Member for Adult Social Care, SEND and Inclusion



d North Ec  
r and Wiltse



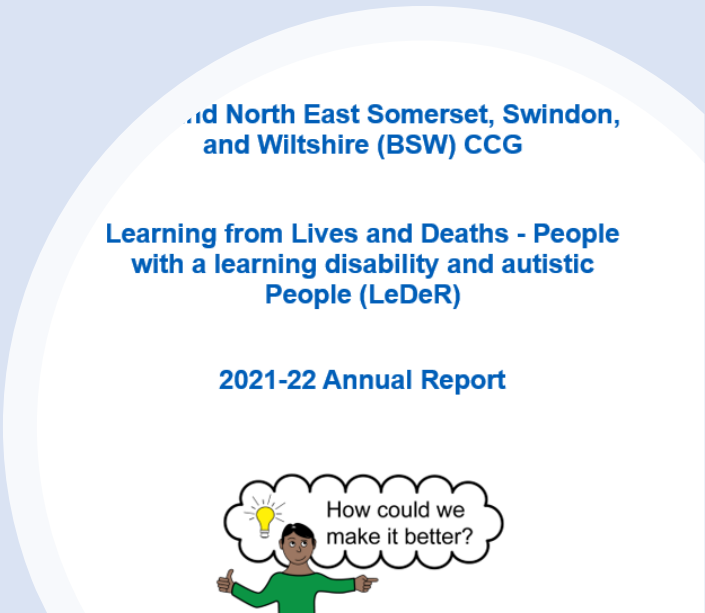
Action from learning  
report 2021/22



NHS

Bath and North East Somerset,  
Swindon and Wiltshire  
Integrated Care Board

Action From Learning  
**LeDeR Report**  
2021 - 2022



Bath and North East Somerset, Swindon,  
and Wiltshire (BSW) CCG

Learning from Lives and Deaths - People  
with a learning disability and autistic  
People (LeDeR)

2021-22 Annual Report



How could we  
make it better?



Learning from lives and deaths  
people with a learning  
disability and autistic people

# What is the LeDeR programme?

The 'Learning from Lives and Deaths - people with a learning disability and autistic people' (LeDeR) inequalities national programme works to:

- 1) **improve care** for people with a learning disability and autistic people (who often have poorer physical and mental health than other people)
- 2) **reduce health inequalities** for people with a learning disability and autistic people
- 1) **prevent people with a learning disability and autistic people dying prematurely** (due to barriers to accessing health and care to keep them healthy)

**National policy:**

<https://www.england.nhs.uk/wp-content/uploads/2021/03/B0428-LeDeR-policy-2021.pdf>

# Deaths in scope in the LeDeR Programme

- People aged 4 years+ with a learning disability
- People with a medically documented autism diagnosis aged over 18 years



# LeDeR Process and Outcomes

- Complete non mandated reviews (not investigations) for the deaths of people with a learning disability and/or autistic people to learn and share lessons
- Learning from LeDeR reviews about good quality care, areas requiring improvement and causes of death
- Driving local service improvements based on themes emerging from LeDeR reviews; to improve the health of people and reduce health inequalities.
- Influencing national service improvements via actions that respond to themes commonly arising from analysis of LeDeR reviews in the national annual LeDeR reports



# How to notify a death to LeDeR

Anyone can make a notification as follows:

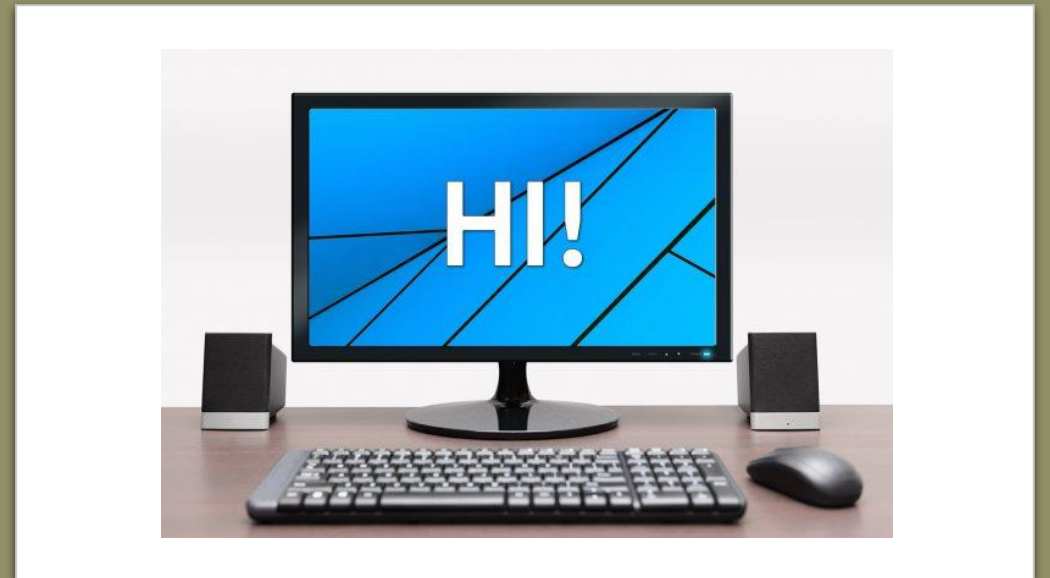
## Online:

<https://leder.nhs.uk/report>


## **Telephone**

01278 727411

Monday to Friday, 8.30am to 4.30pm (except public holidays)



# National LeDeR 2021 Report: National Collective Learning

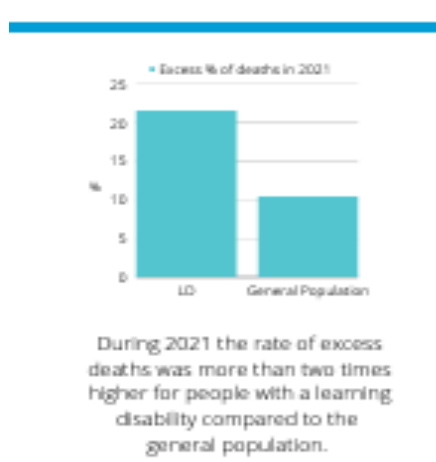
 People with a learning disability usually died **22 years earlier**



 Sometimes, carers found it difficult to notice people were ill.



## KEY TAKEAWAY OF COVID-19



COVID-19 was the leading cause of death for people with a learning disability in 2021.



**9x**

Those who were unvaccinated were 9 times more likely to die of COVID-19 than another cause compared to those who were vaccinated.

As in the general population, there were no excess deaths for children with a learning disability in 2021. Deaths of children with a learning disability from COVID-19 were significantly lower than in the general population.

# BSW LeDeR 2021 Report Learning: Learning Disabilities

## BSW Top Four Causes of Death in 2021

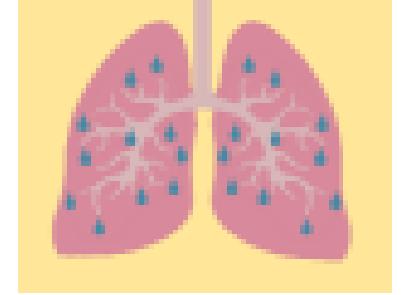
1. Aspiration pneumonia
2. Dementia (noting early onset prevalence)
3. Heart failure
4. Respiratory failure

## BSW System Thematic Learning from Deaths:

- **Individual risk factors;** i.e. recurrent chest infections, choking risks, obesity
- **Personalised care assurance and choice;** end of life identification and good planning
- **Care coordination;** Use of Hospital/Health passports
- **Lifestyle;** opportunities to improve daily living and choices, meaningful happy lives and health and wellbeing.
- **Annual Health Check/Vaccination/Health Action Plan/Cancer screening;** Prevention management
- **Low minority ethnic LeDeR notifications;** opportunities to increase uptake of vaccinations and other health prevention and promotion initiatives

## **BSW Priority Actions:**

- Hospital/Health Passports to be used across the system; understanding/meeting needs
- Reducing Aspiration Pneumonia; awareness and training to identify, report and manage swallow issues
- Increasing covid vaccination uptake



BSW LeDeR Programme Learning over time: Easy Read

The grid contains the following cards:

- mental capacity**: Illustration of a person with question marks and a red 'X' over their head.
- training**: Illustration of a person presenting to a group.
- care coordinator**: Illustration of a person at a desk with a laptop.
- think about health**: Illustration of a person with thought bubbles showing a healthy diet and exercise.
- diversity**: Illustration of a group of diverse people in a circle.
- hospital**: Illustration of an NHS hospital building and a patient in bed.
- palliative care**: Illustration of hands holding a person in bed.
- fed up**: Illustration of a person looking frustrated with their hand to their face.
- accessible information standard**: Illustration of people with various disabilities receiving information.
- get it right**: Illustration of a person with a green checkmark in a thought bubble.
- could die**: Illustration of a person with a thought bubble showing a person in a hospital bed.
- safeguarding**: Illustration of people in a meeting setting.
- annual health check**: Illustration of a person with a green checkmark and a question mark.
- talking about dying**: Illustration of two people talking.
- medication advice**: Illustration of a doctor with a pill bottle.
- sharing your reasonable adjustment care plan**: Illustration of people with arrows indicating a process.
- cervical screening**: Illustration of an NHS building and a person at a screening station.
- choose**: Illustration of a person with a green checkmark and a red 'X' in thought bubbles.
- body mass index BMI**: Illustration of three people of different sizes with a circular arrow.
- care pathway**: Illustration of a person walking on a path towards a building.
- care coordinator**: Illustration of a person at a desk with a laptop.
- fed up**: Illustration of a person looking frustrated with their hand to their face.
- things I used to enjoy**: Illustration of a person with thought bubbles showing leisure activities.
- church**: Illustration of a church building.
- bad teeth**: Illustration of a person's face with a close-up of their teeth.
- advocate**: Illustration of a person with an information icon and a speech bubble.
- about us**: Illustration of a man and a woman standing together.
- epilepsy**: Illustration of a person falling on the ground.
- bowels impacted**: Illustration of a person's torso with a diagram of the digestive system.
- crisis plan**: Illustration of a person with a hand holding a document.
- duty of candour**: Illustration of hands holding a person with an NHS logo.
- check the service**: Illustration of a hand holding a checklist titled 'how is your service?'.
- coronavirus vaccine**: Illustration of a person with a thought bubble showing a vaccine.
- representative**: Illustration of a diverse group of people.
- bring someone with you**: Illustration of a person with a house icon and another person.
- coughing**: Illustration of a person coughing.
- easy read**: Illustration of a person holding a book.
- communication strategy**: Illustration of people with speech bubbles and a red 'X' over one.











### Reasonable Adjustments: Supporting People with a Learning Disability, and/or Autism

## BSW LeDeR Guide:

## Meeting reasonable adjustment needs in practice

BSW LeDeR Learning	Reasonable Adjustment Solution Ideas
<p><b>Hidden disability</b></p> 	<p>Flag on records to alert all staff to needs/adjustments required.</p> <p>Offer/promote Sunflower lanyard to enable visual clue to hidden needs</p> <p>Ensure a Health/Hospital Passport is in place, shared, updated, and followed</p>
<p><b>Noise/Bright Lighting</b></p> 	<p>Find/dedicate a quiet waiting area to reduce impact of noise</p> <p>Reduce brightness in dedicated waiting area to reduce sensory stimuli</p>
<p><b>Anxiety/Anger/Procedure planning</b></p> 	<p>Offer visits to see and understand the appointment area, meet the staff, carer support and social stories</p> <p>Easy Read information, preparation visits, capacity assessment, advocacy support</p>
<p><b>Promoting Understanding</b></p> 	<p>Double appointment times to ensure time to explain and gain understanding.</p> <p>Provide a simple written/printed summary of advice and actions to follow.</p> <p>Easy Read materials to support information sharing and understanding</p> <p>Ensure carer/support person attends too</p>
<p><b>Non-attendance</b></p> 	<p>Carer/family support for appointments</p> <p>Text reminders</p> <p>Non-responders follow up process</p>
<p><b>Medication/health compliance concerns</b></p> 	<p>Annual Health checks with a health action plan</p> <p>Medication reviews</p> <p>Carer/family support during appointments</p> <p>Consider specialist referrals for support <a href="#">LeDeR</a> Community LD team</p>

# BSW LeDeR Tips: Improving Care and Support



## Ask

- Do people have reasonable adjustment needs?
- Ensure awareness training is in place for all staff (the BSW LeDeR Awareness Champion role is available for health and social care)
- Ensure that services ask to see and read health/care passports to promote understanding of and the meeting of peoples needs
- Promote the sunflower lanyard and ensure awareness of the lanyard as a visual aid to ask what additional needs people have

## Listen

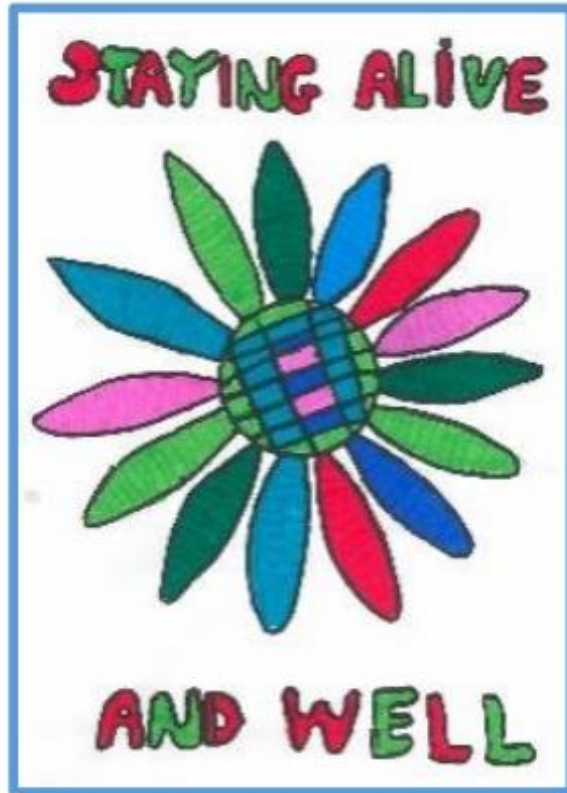
- All services listen to people and their carers or people who know them best
- To what people want-use and comply with the Mental Capacity Act when required to support choices and wishes
- Offer choices and be creative, do not accept 'how we have always done things'

## Do

- Check accuracy of LD diagnosis and needs
- Ensure a record system flag to alert health and care staff to specific needs
- Allow extra time
- Read health/care passports to understand needs and report any health changes/deteriorating conditions
- Ensure that care and support promotes a healthier lifestyle; exercise, health diet and hobbies
- Share easy read/other information to meet needs
- Ensure quiet areas are dedicated for people
- Ensure that commissioned carers request and accompany service users to attend annual health checks, cancer screening and all vaccinations
- Report any concerns through the appropriate incident, complaint or safeguarding route



- BSW LeDeR Emails:
- [bswicb.leder@nhs.net](mailto:bswicb.leder@nhs.net)



Designed by logo competition winner  
Darren Barnes, Greatstone

